

# LAB GROWN DIAMOND

GCAL LG321220176

May 10, 2022

## IDENTIFICATION DATA



The fingerprint system for diamonds

ID No. NY02-494175

Gemprint is the unique optical fingerprint of your lab grown diamond. This patented technology is positive, forensic identification. Protect your investment and receive discounts up to 10% off your annual insurance premiums. Register your diamond at [Gemprint.com](https://www.gcalusa.com/c/321220176)

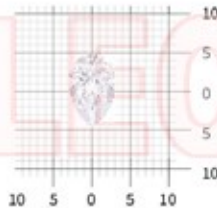


## Laser Inscription



Illustration depicts approx. girdle appearance

## Actual Size



9.34 x 6.08 x 3.86 millimeters (mm)

## Proportion Diagram

Optical scanning technology measures each facet and angle to produce an accurate, to-scale diagram of this lab grown diamond.



Certified  
SUSTAINABILITY RATED DIAMOND  
SCS GLOBAL SERVICES

All certified diamonds come with an individual certificate, ONLY available at an accredited retailer. FOR THE SUSTAINABILITY RATED CERTIFICATE SCAN HERE



## PHOTOMICROGRAPHS

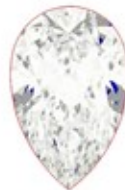


Actual photographs of the crown (top) and pavilion (bottom) of this lab grown diamond photographed at magnifications up to 10x. View hi-res photos at <https://www.gcalusa.com/c/321220176>

## Clarity Characteristics and Locations

Dark Crystal Bezel

## LIGHT PERFORMANCE PROFILE



## Optical Brilliance

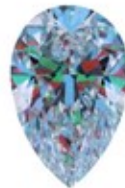
Excellent

Optical Brilliance is the overall return of white light to the viewer. It is measured to the thousandth decimal place and is represented in this image. The white areas indicate light return / brilliance, and the dark blue areas indicate light loss.

## Optical Symmetry

Good

Optical Symmetry is visualized in this photograph of your lab grown diamond taken in a specific colored lighting environment. The evenness of the pattern illustrates the precision and uniformity of facet shapes and alignment.



GCAL Certificate No. LG321220176

Mfr Stone No. M35219

Scan QR code to view photos of this lab grown diamond, grading scales, and to download a PDF of this certificate



## 4C's GRADING

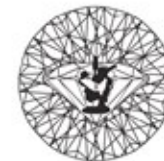
Carat Weight 1.28  
Color F  
Clarity VS2  
Cut Very Good

Shape and Cutting Style Pear Brilliant  
Measurements 9.34x6.08x3.86  
Polish Excellent  
Physical Symmetry Very Good  
Optical Brilliance Excellent  
Optical Symmetry Good  
Table % 57%  
Depth % 63.6%  
Girdle Medium to Thick, Faceted  
Culet None  
Fluorescence None  
Inscription "GROWN IN THE USA" & "PAT. 6,858,078" GCAL Logo & "LG321220176"  
Growth Method CVD  
Country of Origin Grown in the U.S.A

This laboratory grown diamond was created by the CVD (Chemical Vapor Deposition) method, and has the same chemical, physical and optical properties as a mined diamond. As Grown - No evidence of post growth treatment was detected.

## ONE LOCATION. ONE STANDARD. GRADED IN THE USA

Gem Certification & Assurance Lab has examined this lab grown diamond and certifies that the specifications noted in this document are accurate within recognized gemological tolerances. GCAL is an independent third-party and stands behind our grading with a 4Cs Consumer Guarantee. The guarantee, grading scales and all images unique to this lab grown diamond are available at [GCALUSA.com](https://www.gcalusa.com).



Gem Certification & Assurance Lab, Inc.  
ISO 17025 Accredited Forensic Laboratory  
580 Fifth Ave, Flr 27  
New York, NY 10036  
T 212-869-8985  
GCALUSA.com



ISO/IEC 17025 2017  
ANAB L2177-1 Accredited Testing Lab