

Identification Data



July 20, 2020

LAB GROWN DIAMOND
Certificate No: 301910180

Gemprint™

Gemprint is the unique optical fingerprint for positive identification of your lab grown diamond. Register your lab grown diamond at www.Gemprint.com and receive insurance discounts up to 10%.



Laser Inscription:

The illustration depicts enlarged and approximate appearances of the inscriptions. Girdle laser inscribed "GROWN IN THE USA BY WD", GCAL Logo and "LG301910180"



GCAL GEM CERTIFICATION & ASSURANCE LAB
ISO 17025 ACCREDITED FORENSIC LABORATORY

580 Fifth Avenue LL-05, NY, NY 10036 USA • T 212.869.8985 • GCALUSA.com

ISO/IEC 17025:2017
ANAB L2177-1
Accredited Testing Lab



The 4Cs Grading Analysis

GCAL 301910180

LAB GROWN DIAMOND*

Carat Weight:

1.44

Cut:

Excellent

Shape:

Round Brilliant

Measurements:

7.25-7.30x4.45mm

Optical Brilliance:

Excellent

Optical Symmetry:

Excellent

Polish:

Very Good

External Symmetry:

Excellent

Girdle Thickness:

Medium-SI.Thick

Culet Size:

None

Color:

I

Fluorescence:

None

Clarity:

VS1

Identifying Characteristic(s):

Clouds/Feathers

Characteristic Location(s):

Table, Bezel, Table-Bezel/
Star, Pavilion

*Comments: This man-made diamond was grown in a laboratory by the CVD method, and has the same chemical, physical, and optical properties as an earth mined diamond.

Photomicrographs:

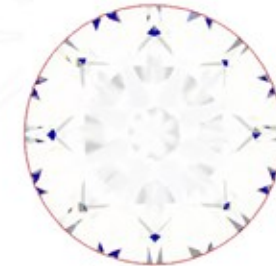
Actual images of the crown (top) and pavilion (bottom) of this diamond photographed at magnifications up to 10x.



Light Performance Profile

Optical Brilliance Analysis:

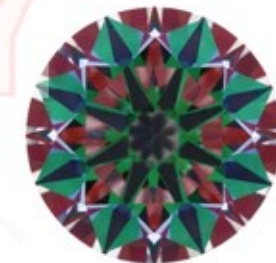
Brilliance is the overall return of light to the viewer. The brilliance image is a representation of (a) white areas of light return, or brilliance, and (b) dark-blue areas of light loss.



Optical Brilliance
Excellent

Optical Symmetry Analysis:

The colored areas of the symmetry image are indications of light handling ability, giving a visual representation of proportions and facet alignment.



Optical Symmetry
Excellent

Proportion Diagram:

The proportion diagram illustrates the actual dimensions as recorded by optical scanning technology.

