

## Identification Data



July 9, 2021

LAB GROWN DIAMOND

Certificate No: 311760058

**Gemprint**

Gemprint is the unique optical fingerprint for positive identification of your lab grown diamond. Register your lab grown diamond at [www.Gemprint.com](http://www.Gemprint.com) and receive insurance discounts up to 10%.



### Laser Inscription:

The illustration depicts enlarged and approximate appearances of the inscriptions. Girdle laser inscribed "GROWN IN THE USA BY WD", "PAT. 6,858,078", GCAL Logo and "LG311760058"



**GCAL**

GEM CERTIFICATION & ASSURANCE LAB  
ISO 17025 ACCREDITED FORENSIC LABORATORY

580 Fifth Avenue LL-05, NY, NY 10036 USA • T 212.869.8985 • [GCALUSA.com](http://GCALUSA.com)

ISO/IEC 17025:2017  
ANAB L2177-1

Accredited Testing Lab



## The 4Cs Grading Analysis

GCAL 311760058

LAB GROWN DIAMOND\*

Carat Weight:

1.09

Cut:

Very Good

Shape:

Cushion Modified Brilliant

Measurements:

7.08x5.45x3.43mm

Optical Brilliance:

Excellent

Optical Symmetry:

Good

Polish:

Excellent

External Symmetry:

Very Good

Girdle Thickness:

SI.Thick-Ex. Thick

Culet Size:

None

Color:

F

Fluorescence:

None

Clarity:

VS1

Identifying Characteristic(s):

Crystals

Characteristic Location(s):

Table, Upper Girdle

\*Comments: This laboratory grown diamond was created by the CVD (Chemical Vapor Deposition) method, and has the same chemical, physical, and optical properties as a mined diamond. This diamond is Type IIa, which means it is devoid of nitrogen impurities. As Grown - No evidence of post-growth treatment was detected.

### Photomicrographs:

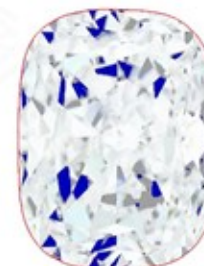
Actual images of the crown (top) and pavilion (bottom) of this diamond photographed at magnifications up to 10x.



## Light Performance Profile

### Optical Brilliance Analysis:

Brilliance is the overall return of light to the viewer. The brilliance image is a representation of (a) white areas of light return, or brilliance, and (b) dark-blue areas of light loss.



Optical Brilliance  
Excellent

### Optical Symmetry Analysis:

The colored areas of the symmetry image are indications of light handling ability, giving a visual representation of proportions and facet alignment.



Optical Symmetry  
Good

### Proportion Diagram:

The proportion diagram illustrates the actual dimensions as recorded by optical scanning technology.

