

LAB GROWN DIAMOND

GCAL LG321190065

May 6, 2022

IDENTIFICATION DATA

Gemprint The fingerprint system for diamonds

ID No. NY02-493397
Gemprint is the unique optical fingerprint of your lab grown diamond. This patented technology is positive, forensic identification. Protect your investment and receive discounts up to 10% off your annual insurance premiums. **Register your diamond at Gemprint.com**

Laser Inscription

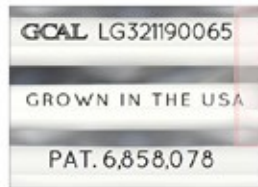
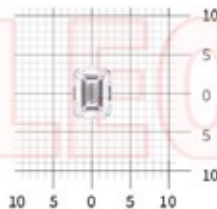


Illustration depicts approx. girdle appearance

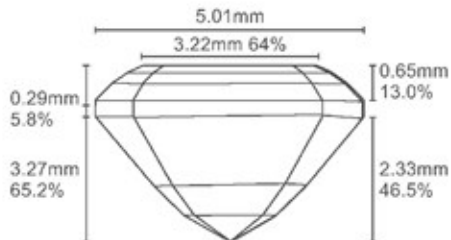
Actual Size



6.76 x 5.01 x 3.27 millimeters (mm)

Proportion Diagram

Optical scanning technology measures each facet and angle to produce an accurate, to-scale diagram of this lab grown diamond.



PHOTOMICROGRAPHS



Actual photographs of the crown (top) and pavilion (bottom) of this lab grown diamond photographed at magnifications up to 10x. View hi-res photos at <https://www.gcalusa.com/c/321190065>

Clarity Characteristics and Locations

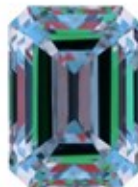
Clouds, Pinpoints, Feathers Table

LIGHT PERFORMANCE PROFILE



Optical Brilliance Excellent

Optical Brilliance is the overall return of white light to the viewer. It is measured to the thousandth decimal place and is represented in this image. The white areas indicate light return / brilliance, and the dark blue areas indicate light loss.



Optical Symmetry Very Good

Optical Symmetry is visualized in this photograph of your lab grown diamond taken in a specific colored lighting environment. The evenness of the pattern illustrates the precision and uniformity of facet shapes and alignment.

GCAL Certificate No. LG321190065

Mfr Stone No. M54598

Scan QR code to view photos of this lab grown diamond, grading scales, and to download a PDF of this certificate



4C's GRADING

Carat Weight **1.05**
Color **F**
Clarity **VS1**
Cut **Excellent**

Shape and Cutting Style **Emerald Step**

Measurements **6.76x5.01x3.27**

Polish **Very Good**

Physical Symmetry **Very Good**

Optical Brilliance **Excellent**

Optical Symmetry **Very Good**

Table % **64%**

Depth % **65.2%**

Girdle **Thick**

Culet **None**

Fluorescence **None**

Inscription **"GROWN IN THE USA" & "PAT. 6,858,078" GCAL Logo & "LG321190065"**

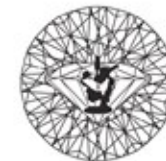
Growth Method **CVD**

Country of Origin **Grown in the U.S.A**

This laboratory grown diamond was created by the CVD (Chemical Vapor Deposition) method, and has the same chemical, physical and optical properties as a mined diamond. As Grown - No evidence of post growth treatment was detected.

ONE LOCATION. ONE STANDARD. GRADED IN THE USA

Gem Certification & Assurance Lab has examined this lab grown diamond and certifies that the specifications noted in this document are accurate within recognized gemological tolerances. GCAL is an independent third-party and stands behind our grading with a 4Cs Consumer Guarantee. The guarantee, grading scales and all images unique to this lab grown diamond are available at [GCALUSA.com](https://www.gcalusa.com).



Gem Certification & Assurance Lab, Inc.
ISO 17025 Accredited Forensic Laboratory

580 Fifth Ave, Flr 27
New York, NY 10036
T 212-869-8985
[GCALUSA.com](https://www.gcalusa.com)



ISO/IEC 17025 2017
ANAB L2177-1 Accredited Testing Lab

Certified
SUSTAINABILITY RATED DIAMOND
SCS GLOBAL SERVICES

All certified diamonds come with an individual certificate, ONLY available at an accredited retailer.
FOR THE SUSTAINABILITY RATED CERTIFICATE SCAN HERE

